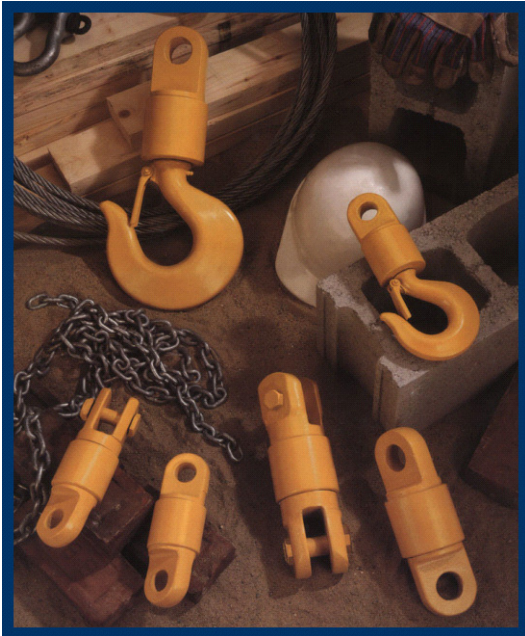


# SWIVELS- ECONO-LINK, THRUST BEARING SWIVELER



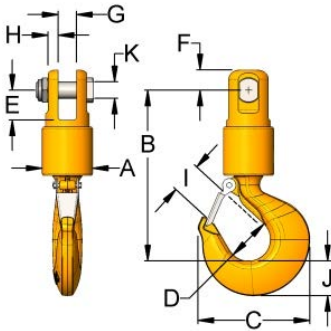
- Single tapered thrust bearing, factory lubricated
- Tight-fit bronze bushing acting as a seal, retains lubricant and protects bearing
- Load capacities from 3 to 15 tons
- Wire rope diameters from 1/2" to 1"
- Six popular clevis, hook, and eye configurations available
- Structural components from cast alloy steel
- Hook models with forged alloy steel hook and safety latch
- Finished with enamel coating
- 4:1 design factor, Proof Load is 2 x WLL

**NEW! Insulated**  
*Insulated Swivel for Suspended Welding & Other DC current protection applications*



- Includes all the same, proven Econo-Link features, plus advanced electrical protection
- Rated for 2000 volts direct current (DC only)
- Electrical test certificates available
- To order, add suffix "-DC", e.g., 3E185-DC

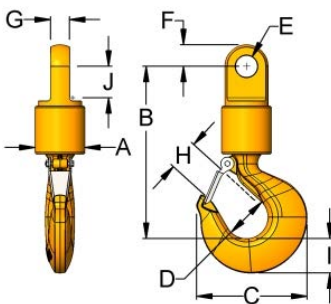
## CLEVIS TO HOOK - TYPE 185



WLL* Tons	Model Number	Rope Size	A	B	C	D	E	F	G	H	I	J	K	Weight Lbs.
3	3E185	1/2	2.63	8.12	4.84	2.00	1.38	1.19	1.00	.50	1.36	1.44	.75	8.8
6	6E185	5/8	3.34	10.24	6.28	2.50	1.94	1.31	1.13	.75	1.61	1.82	1.00	18.8
10	10E185	3/4	3.75	12.78	8.34	3.25	2.25	1.50	1.38	.75	2.27	2.60	1.25	34.9
15	15E185	1	4.13	15.77	10.34	4.25	2.56	1.81	1.75	.88	3.02	3.01	1.38	56.0

\* Design factor 4:1

## EYE TO HOOK - TYPE 285

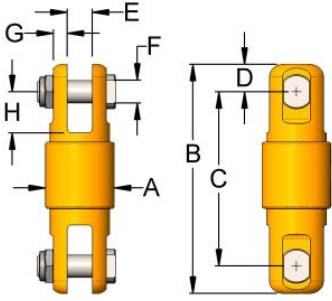


WLL* Tons	Model Number	Rope Size	A	B	C	D	E	F	G	H	I	J	Weight Lbs.
3	3E285	1/2	2.63	7.87	4.84	2.00	1.06	1.13	1.00	1.36	1.44	1.13	8.1
6	6E285	5/8	3.34	9.75	6.28	2.50	1.41	1.50	1.19	1.61	1.82	1.38	16.7
10	10E285	3/4	3.75	13.03	8.34	3.25	1.66	1.63	1.44	2.27	2.60	2.38	33.8
15	15E285	1	4.13	15.95	10.34	4.25	2.06	1.88	1.94	3.02	3.01	2.63	55.8

\* Design factor 4:1

## SWIVELS- ECONO-LINK, THRUST BEARING SWIVELER

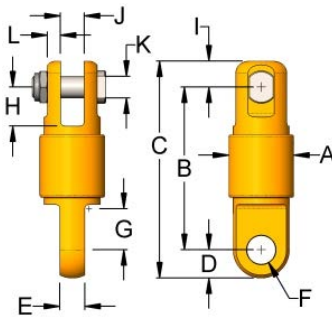
### CLEVIS TO CLEVIS - TYPE 181



WLL* Tons	Model Number	Rope Size	A	B	C	D	E	F	G	H	Weight Lbs.
3	3E181	1/2	2.63	6.27	8.65	1.19	1.00	.75	0.5	1.38	7.7
6	6E181	5/8	3.34	8.16	10.78	1.31	1.13	1.00	0.75	1.94	16.7
10	10E181	3/4	3.75	9.53	12.53	1.50	1.38	1.25	0.75	2.25	23.7
15	15E181	1	4.13	11.19	14.81	1.81	1.75	1.38	0.88	2.56	33.8

\* Design factor 4: 1

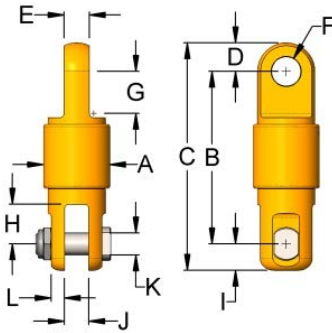
### CLEVIS TO EYE - TYPE 182



WLL* Tons	Model Number	Rope Size	A	B	C	D	E	F	G	H	I	J	K	L	Weight Lbs.
3	3E182	1/2	2.63	5.90	8.21	1.13	1.00	1.06	1.13	1.38	1.19	1.00	.75	.50	6.9
6	6E182	5/8	3.34	7.41	10.22	1.5	1.19	1.41	1.38	1.94	1.31	1.13	1.00	0.75	14.2
10	10E182	3/4	3.75	9.41	12.53	1.63	1.44	1.66	2.38	2.25	1.50	1.38	1.25	0.75	21.6
15	15E182	1	4.13	11.13	14.81	1.88	1.94	2.06	2.63	2.56	1.81	1.75	1.38	0.88	31.9

\* Design factor 4: 1

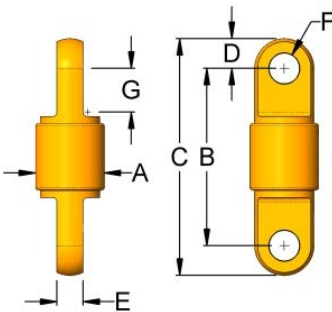
### EYE TO CLEVIS - TYPE 281



WLL* Tons	Model Number	Rope Size	A	B	C	D	E	F	G	H	I	J	K	L	Weight Lbs.
3	3E281	1/2	2.63	6.02	8.34	1.13	1.00	1.06	1.13	1.38	1.19	1.00	.75	.50	7.1
6	6E281	5/8	3.34	7.66	10.47	1.50	1.19	1.41	1.38	1.94	1.31	1.13	1.00	0.75	14.8
10	10E281	3/4	3.75	9.78	12.91	1.63	1.44	1.66	2.38	2.25	1.50	1.38	1.25	0.75	22.6
15	15E281	1	4.13	11.38	15.06	1.88	1.94	2.06	2.63	2.56	1.81	1.75	1.38	0.88	33.6

\* Design factor 4: 1

### EYE TO EYE - TYPE 282



WLL* Tons	Model Number	Rope Size	A	B	C	D	E	F	G	Weight Lbs.
3	3E282	1/2	2.63	5.65	7.90	1.13	1.00	1.06	1.13	6.3
6	6E282	5/8	3.34	6.91	9.91	1.50	1.19	1.41	1.38	12.4
10	10E282	3/4	3.75	9.66	12.91	1.63	1.44	1.66	2.38	20.6
15	15E282	1	4.13	11.31	15.06	1.88	1.94	2.06	2.63	31.8

\* Design factor 4: 1