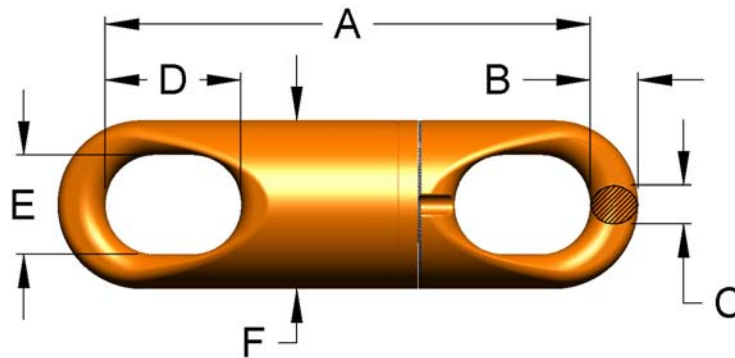


CHAIN SWIVELS- C-LINK, MARINE, EYE & EYE



- Mean Breaking Loads (MBL) from 250 to 1000 tons and for chain sizes from 2-inch to 4-inch.
- Designed for extended use in marine environments regardless of depth of deployment.
- Equipped with radial and thrust bearings of special composite materials impregnated with dry lubricant. Operates in flooded condition.
- No ongoing lubrication requirement.
- Special seals keep out silt and sand.
- Intended for deepwater mooring lines, anchor handling lines.
- Made from high strength chromium-molybdenum alloy steel.
- Includes magnetic particle and ultrasonic evaluation.
- Proof load test and compliance certifications provided.
- Compatible with appropriate size connecting links.
- Finished with multi-part marine coating system in safety orange.
- See tables for proof load (PL) information.

Note: In the case of passage of swivel over stern rollers or sheaves the maximum load should not exceed 1/3 of the MBL and the angle of entry to the roller or sheave should be no less than 30° to the vertical plane.



Model Number	SIZE (in.)	SIZE mm	MBL ton	PL ton	A	B	C	D	E	F	Weight Lbs.
CS200EE	2	50	250	100	24.31	2.16	1.97	6.49	4.52	7.88	200
CS225EE	2 1/4	58	*								
CS250EE	2 1/2	64	400	160	29.06	2.95	2.56	8.07	5.9	10.00	390
CS275EE	2 3/4	70	*								
CS300EE	3	76	600	240	33.76	3.34	2.95	9.44	6.89	11.75	600
CS325EE	3 1/4	84	*								
CS350EE	3 1/2	90	800	320	40.74	4.13	3.74	11.22	8.07	14.00	1090
CS375EE	3 3/4	95	*								
CS400EE	4	102	900	360	44.92	4.33	3.94	12.60	8.85	15.00	1300

* IN DEVELOPMENT